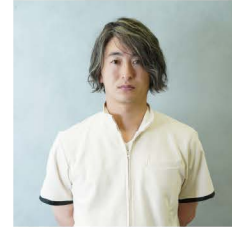


Emulation -Ridge Augmentation-



山本 賢
Ken Yamamoto

CV

Graduated from Nihon university school of dentistry in 2011
Worked at Togashi Dental Clinic in Minato-city, Tokyo (2012-2017)
Worked at Suzuki Dental Office in Katsushika-city, Tokyo (2017-2021)
Founded Yamamoto Dental Office in Fujimino-city, Saitama (2021-present)

Japan Association of Microscopic Dentistry Certified Doctor

abstract

In anterior tooth restoration, it goes without saying that harmony with the surrounding soft tissues is required, not just the restoration itself. Harmony means matching the color and form to the surrounding tissues, and to achieve this, it is necessary to emulate the characteristics of the surrounding tissues.

Soft tissue reconstruction using connective tissue grafting does not automatically result in an ideal contour if performed without careful consideration. Meticulous preoperative planning, including appropriate flap design and graft configuration, is indispensable.

In this presentation, I will share a clinical case in which ridge augmentation at the pontic site was performed under a surgical microscope using connective tissue grafting to emulate the soft tissue of the contralateral homologous tooth. I look forward to discussing this case with colleagues from around the world.

There are no conflicts of interest in this case.

前歯部欠損修復において、修復物だけでなく、その周囲の軟組織の調和も要求されるのはいうまでもない。

調和とは周囲組織と比較して色調、形態が揃うことであり、それを達成するためには周囲組織の特徴を模倣する必要がある。

結合組織移植による軟組織再建は、やみくもに処置を行っても理想的な形態を作れるものでは当然なく、

フラップデザインや移植片の設計など事前の綿密な手術計画が必要になる。今回は反対側同名歯の軟組織を模倣してポンティック部に結合組織移植による歯槽増大術を顕微鏡下で行った症例を供覧し、各国の先生方とディスカッションしたいと考えている。

本症例に利益相反はない
